

NEW LUBBESTHORPE PRIMARY SCHOOL NEWSLETTER



September 2021

Message from Miss Hackett

Thank you for helping us to have a fantastic start to the term. The children have settled well into their classes and routines are being successfully established.

The sun has been shining, the children have fully engaged in their learning. Well done to everyone!

The days are working well although we still have a few children without names in their school uniform. I am really pleased to see so many pupils wearing correct school uniforms and PE Kit. Thank you also for your ongoing support with considerate parking at drop off and pick up times.

Parents Evening

We will be holding our parents evening on Tuesday 12th & Wednesday 13th October. Our class teachers will make themselves available for a ten minute 'Parent's evening slot'. Our staff will be in their classrooms at that time, this will give you the opportunity to see the learning environment, look at your child's books and talk to your child's class teacher.

Details about booking to follow.



Reading and Homework

All KS1 and KS2 children are now being set weekly homework and spellings. Homework is set on a Friday and is due the following Wednesday and spelling tests are every Friday. Homework will either be in their homework book or on Purple Mash. If there is no homework stuck in their homework book, it means it is on Purple Mash and you need to log in to access it. All children in KS1 and KS2 also now have reading books. We ask you to support with reading at home. We recommend that your child reads on an almost daily basis and that this reading is recorded in their reading record, which will be checked each week in school. Please ensure that your child have their reading books and record in their book-bag each day. The children in EYFS will soon be sent home with reading books and homework too. Thank you for all you do to support your child with their learning - your help is much appreciated!

Harvest Festival

Harvest Festival will take place on Monday 4th October. The children will learn about harvest festival in our whole school assembly. This year, we are asking the children, parents, friends and family to bring their donations of produce and food as individual items such as packets and tins. Tubs to collect the items will be placed outside classrooms each morning and afternoon in which to place your donations. As part of our charitable work all items collected will be donated to worthy causes and individuals in our local community. Sue Steer Community Pioneer who works in the HUB, will take the lead on this. We would be grateful if products could be brought in on the week commencing Monday 20th September until Friday 24th September so that we will have plenty of time to prepare them for the assembly. Your support with this event is much appreciated and all concerned would like to thank you for your help and support in advance.

School Building Update

The area behind the HUB has been developed with a Multi Use Games Area for a variety of multi Sports, we are looking forward to our children having the opportunities to use these facilities.

We are pleased to announce that our school library has been installed with a very exciting and visual woodland theme. Thank you for all of your donations and the ongoing support of the PTA.

School Admissions

Link to Primary School admissions for friends and family:

<https://www.leicestershire.gov.uk/education-and-children/schools-colleges-and-academies/school-admissions>

Vaccinations

We will be having school nurses in school on Thursday 16th December. An invitation letter will go out separately, explaining how to submit the digital consent form in order to register your child for the flu vaccination. Please contact the Community Immunisation Service directly if you have any questions on Tel: 0300 3000 007 or by email at communityimms@leicspart.nhs.uk. The online consent can be found at www.leicsandrutlandimms.co.uk.

Sunrise/Sunset Club

Thank you for using the School Gateway for booking your child's before and after school.



Reminders

Outside play area: Polite reminder to parents, please do not allow your children to play on the outside equipment in the EYFS area before or after school hours, for safety reasons.

Diamond Awards

Hares (EYFS - Miss Brookes)

3rd September - Jaidan, for always following the diamond rules and showing respect to everyone and everything at all times.

10th September - Sophia, always being kind, caring for everyone and everything and showing respect to her peers and teachers.

Rabbits (EYFS - Mrs Gittins)

3rd September - Evelyn, for always respecting everyone and everything

10th September - Jenson, for being a good friend to everyone and inviting others to join in with his games

Kangaroos (Year 1 - Miss Simionato)

3rd September - Tyler, for bring brave in his new class and making lots of new friends.

10th September - Louie, for working hard in science and using expert knowledge to help his friends.

Koalas (Year 1 - Miss Daley)

3rd September - William, for always following the Diamond rules and being a role model student.

10th September - Eddie, for having a positive attitude towards learning and always trying his hardest during lessons.

Penguins (Year 2 - Miss Gallagher)

3rd September- Grace, for following instructions carefully and trying hard with all her learning.

10th September- Tanaya, for showing respect and kindness to everyone and always trying her best.

Polar bears (Year 2 - Miss Hancock)

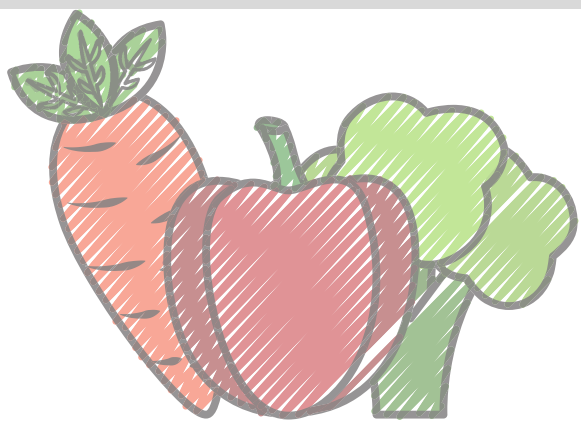
3rd September - David, for always being respectful to everyone and having wonderful manners all the time.

10th September - Abigail, for her lovely manners, she is always so polite and follows all instructions with thought and care.

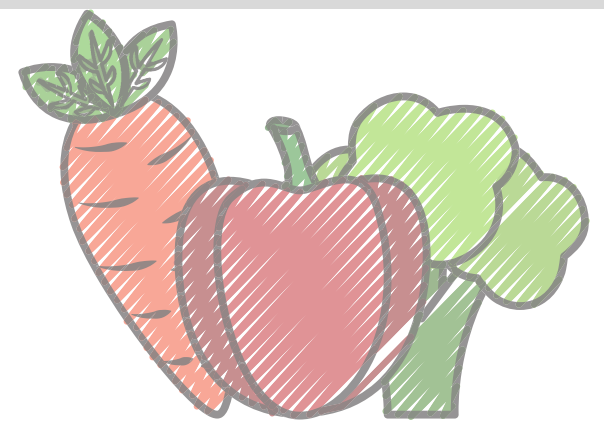
Turtles (KS2 - Miss Frearson)

3rd September - Lauren, for being a good friend to everyone, aswell as working really hard in her lessons!

10th September - Nieve, for showing respect to everyone around her, aswell as wowing with her maths work!



Morrisons - Its good to Grow



Morrison's have launched 'It's Good to Grow'. The programme aims to encourage school children to get outdoors and get growing, helping them to understand where their food comes from and how to grow their own fruit and vegetables, in order to make healthier food choices now and in the future.

Between Monday 6th September and Sunday 24th October, for every £10 spent in store or online, customers will get 1 Grow Token which they can donate to their chosen school. Then, from 1st November, schools will be able to redeem their Grow Tokens against a wide variety of gardening equipment. New Lubbesthorpe Primary has signed up to the scheme and it would be great to receive some gardening equipment so that the children can start planting things around the school. Thank you

Please see below for further information from Morrison's:

What is the programme?

"We're giving customers 1 token for every £10 they spend in store and online to donate to their chosen school so they can collect FREE gardening equipment. All you need to do use your My Morrisons card each time you shop with us."

How do I take part?

"It's really simple to take part, all you need to do is have a My Morrisons account, which you can access online or via the app. Then each time you shop with us in store or online, you can collect Grow tokens for your chosen school."

Why do I need a My Morrisons account?

I cannot find my local school when I log in.

I don't have the My Morrisons app.

"By using My Morrisons to track your donations, it means we can go paperless and ensure we can keep as many trees growing as possible."

"Don't worry, you can do everything on the mymorrisons.com website. It's really simple to select your school and donate your tokens."

Isolation Rules

When to self-isolate

- Self-isolate straight away and get a PCR test (a test that is sent to the lab) on GOV.UK as soon as possible if you have any of these 3 symptoms of COVID-19, even if they are mild:
 - a high temperature
 - a new, continuous cough
 - a loss or change to your sense of smell or taste
- You should also self-isolate straight away if:
 - you've tested positive for COVID-19 – this means you have the virus
 - someone you live with has symptoms or tested positive (unless you are not required to self-isolate – check below if this applies to you)
 - you've been told to self-isolate following contact with someone who tested positive – find out what to do if you're told to self-isolate by NHS Test and Trace or the NHS COVID-19 app
- Information:
 - You may need to quarantine when you arrive in England from abroad. Check the quarantine rules when entering England on GOV.UK

When you do not need to self-isolate

If someone you live with has symptoms of COVID-19, or has tested positive for COVID-19, you will not need to self-isolate if any of the following apply:

- you're fully vaccinated – this means 14 days have passed since your final dose of a COVID-19 vaccine given by the NHS
- you're under 18 years, 6 months old
- you're taking part or have taken part in a COVID-19 vaccine trial
- you're not able to get vaccinated for medical reasons

Even if you do not have symptoms, you should still:

- get a PCR test on GOV.UK to check if you have COVID-19
- follow advice on how to avoid catching and spreading COVID-19
- consider limiting contact with people who are at higher risk from COVID-19

New Lubbesthorpe Dates for your Diary 2021 - 2022

Wednesday 25 th August	SCHOOL OPENS
Tuesday 14 th September	Phonics and reading open afternoon 3:15 – 4:00pm – All Parents welcome
Wednesday 15 th September	School Individual Photographs
Wednesday 29 th September	Maths Sessions 3:15-4:00pm – All Parents welcome
Tuesday 12 th & Wednesday 13 th October	Parents' evenings 3:15 – 5:30pm
Monday 18 th – Friday 22 nd October	Half term
Monday 25 th October	Pupils return to school after half term break
Friday 26 th November	Community Light switch on & Craft fair 4pm
Friday 3 rd December	EYFS performance 9:30am & 2:00pm
Tuesday 7 th December	Y1&2 performance 2.00pm & 6:00pm
Wednesday 8 th December	KS2 Christmas Carols 2.00pm & 6:00pm
Tuesday 14 th December	EYFS Party Afternoon
Wednesday 15 th December	Y1&2 Party Afternoon
Thursday 16 th December	KS2 Party Afternoon
Thursday 16 th December	Flu Vaccinations
Friday 17 th December	End of term
Tuesday 4 th January	SCHOOL OPENS for children
Tuesday 8 th & Wednesday 9 th February	Parents evenings 3:15 – 5:30pm
Monday 14 th - Friday 18 th February	Half term
Friday 25 th February	EYFS Class assembly
Friday 4 th March	Y1 Class assembly
Friday 11 th March	Y2 Class assembly
Friday 18 th March	KS2 Class assembly
Monday 11 th April – Friday 22 nd April	Easter Break
Monday 25 th April	SCHOOL OPENS
May	Year 2 SAT's start
Monday 2 nd May	School closed for May Day
Monday 9 th May – Thursday 12 th May	Year 6 SAT's week
Tuesday 10 th May	Class Photographs
Monday 30 th May – Friday 3 rd June	Half term
Monday 6 th June	Y1 Phonics and Y4 multiplication checks
Saturday 11 th June	Summer Fun Day
Friday 17 th June	Sports Day
Friday 1 st July	Reserve Sports Day
Monday 4 th July	Parents to meet the teacher
Friday 8 th July	Year 6 Leavers Afternoon End of term

All dates/events are subject to being postponed or cancelled due to COVID19 or any other factor that is beyond our control.

Thank you for your support and understanding.

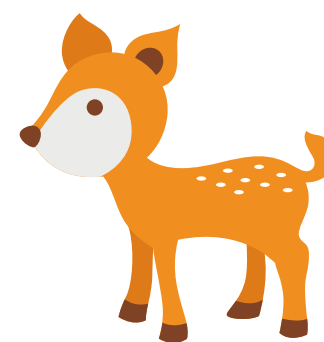
Car Parking and other information

We are getting complaints from residents on Tay Road regarding parking. Please can we remind parents and carers to not park directly by the school entrances/gates or on the restricted areas by the school. This includes private parking spaces of our residents. It causes an obstruction for our residents and the parents and carers bringing their children to and from school which could result in an accident. We will continue to monitor the parking by the school and we will be talking to parents who park without the care and consideration to others. Thank you for your support with this matter.

Please can we remind parents/carers to send their children into school with just water in their beakers as we are a healthy school and do not encourage sugary drinks such as cordial and juices.

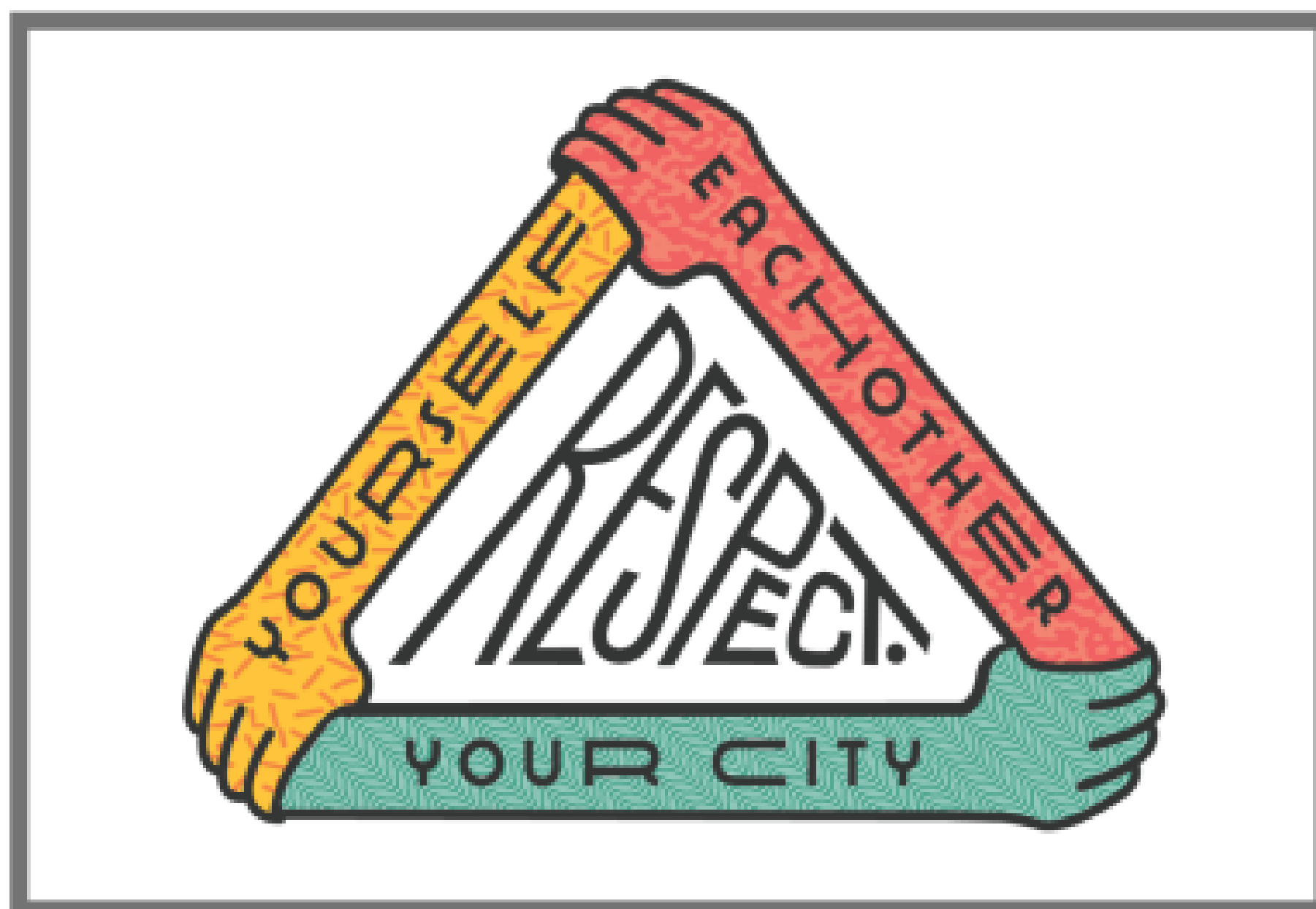


Our woodland Library



September's Core Value - Respect

Respect



- Respect is being kind to myself and my friends.
- Respect is feeling good about myself.
- Respect is listening to others and their ideas.
- Respect is treating others nicely.
- Respect is treating my surroundings and objects nicely and taking care of them.

Respect					
Tolerance	Friendship	Justice	Liberty	Responsibility	Equality
Democracy	Freedom	(Rule of Law)			